

Coromandel Scallop Restoration Plan

Joe Davis, Ngāti Hei

Sam Woolford, LegaSea



What's happening?

1. Local communities have noticed a significant decline in scallop populations.
2. For the last 36 months the local community have raised their concerns with MPI.
In particular:
 - a. the declining scallop populations, and
 - b. destructive nature of scallop dredging

These efforts have been largely ignored.

3. This has led to the community joining forces to take action.



Opito Bay Rāhui

17 December 2020. Ngāti Hei launched a voluntary rāhui on all scallop harvesting in Opito Bay.

This is supported by:

1. New Zealand Sport Fishing Council
2. Opito Bay Ratepayers Association
3. Kūaotunu Ratepayers Association
4. Mercury Bay Sport Fishing Club
5. Tairua-Pauanui Sport Fishing Club
6. Whangamata Ocean Sports Club
7. New Zealand Underwater Association
8. Spearfishing NZ
9. LegaSea



Community support is crucial

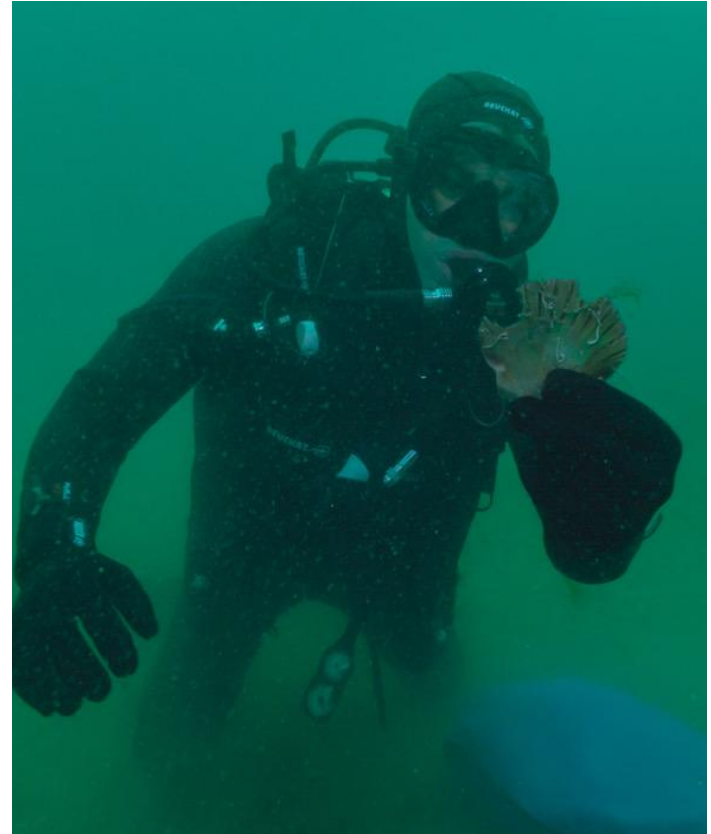
1. The rāhui has been invaluable bringing mana whenua and community together finding common ground
2. Local communities and fishing clubs have worked hard to let people know about the rāhui.
3. By being open and inclusive we have seen wide acknowledgement and support of the need for the rāhui. The community have respected it.



Long Term Management

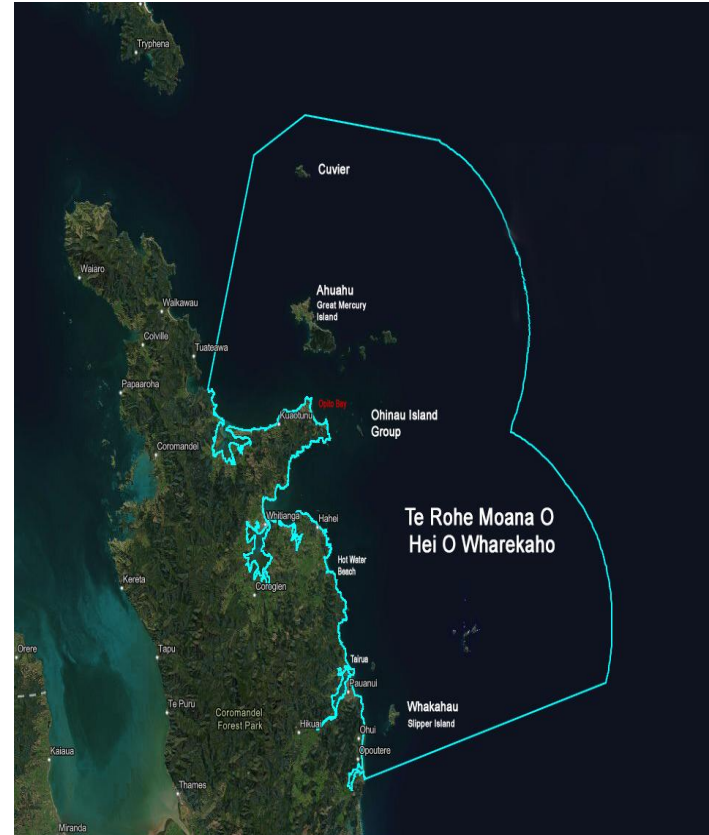
Rāhui is a powerful management intervention. It has allowed for:

1. **Establish a baseline.** Dive Zone Whitianga has had volunteer divers carry out the survey with the New Zealand Sport Fishing Council and Dave Guccione collating the data.
2. **Get the rebuild underway.** The rāhui will remain until scallop populations recover to a minimum of 50% biomass (B50).
3. **Initiate the removal of destructive harvest techniques.** Only hand gathering will be permitted in the future.



Whats next?

1. The overwhelming support has seen the rāhui expanded to encompass the entire Ngati Hei rohe.
2. A 186a application has been lodged with MPI so the rāhui can become a bylaw.
3. Support for the removal of all mobile contact fishing techniques is growing. Support most welcome from:
 - a. Yachting New Zealand
 - b. Royal New Zealand Yacht Squadron
 - c. Te Atatu Boating Club
 - d. Outboard Boating Club (OBC)
 - e. Kawau Boating Club
 - f. New Zealand Casting and Angling



**He herenga waka he whitiwhiti whakaaro
he whitiwhiti korero e u ko te marama**

*Whenever canoes are tied up together, thoughts are exchanged,
dialogue is exchanged and enlightenment comes forth.*